

# COLLEGE SCHOLARSHIP PROGRAM PROFILE

JACK KENT COOKE  
FOUNDATION

The Jack Kent Cooke Foundation is dedicated to advancing the education of exceptionally promising students who have financial need. Since 2000, the Foundation has awarded almost \$304 million in scholarships to more than 3,400 students from 8th grade through graduate school, along with comprehensive educational advising and other support services. The Foundation has also provided \$136 million in grants to organizations that serve such students.

## THE PROGRAM EXPERIENCE

The Cooke College Scholarship Program is an undergraduate scholarship program available to high-achieving high school seniors with financial need who seek to attend the nation's best four-year colleges and universities. Each Cooke Scholar has access to generous financial support for up to four years, ongoing academic coaching and advising, graduate school and career advising, and access to a thriving network of Cooke Scholars and Alumni. As part of their scholarship, recipients may:

- Receive a scholarship that will fund a portion of educational costs, including tuition, room and board, books, and other required fees for the period required to complete the undergraduate degree program. The award, which is last dollar funding after all institutional aid, aims for Scholars to complete their undergraduate education with as little debt as possible. The maximum amount of the Cooke Foundation's scholarship is \$55,000 per year.
- Pursue any area of study.
- Have access to one-on-one advising about selecting a college, navigating financial aid, transitioning to college, and maximizing the college experience.
- Be eligible for opportunities for internships, conference stipends, and study abroad, and to apply for the Cooke Graduate Scholarship.

## WHO WE SELECT

Cooke College Scholarship recipients are selected from a nationwide applicant pool each year. At a minimum, students must:

- Complete four years of high school in the U.S., a U.S. territory, or on a U.S. military base and plan to graduate in spring 2025.
- Intend to enroll full time in an accredited 4-year college in fall 2025.
- Earn a cumulative unweighted GPA of 3.75 or above in high school.
- Demonstrate financial need. We will consider applicants with a maximum annual family gross income of \$95,000. Last year's recipients had a median family income of approximately \$34,000. During the selection process, a full financial review will take into account all income and assets of the student and the student's parents.

APPLICATION OPEN  
AUGUST 22, 2024 - NOVEMBER 14, 2024

APPLY ONLINE THROUGH THE COMMON APP  
[JKCF.ORG/COLLEGE](https://www.jkcf.org/college)

Cooke Scholars come from diverse racial and ethnic backgrounds and from rural, suburban, and urban communities. Many Scholars are the first in their families to pursue higher education.

# 2024 SELECTED COLLEGE SCHOLARS

JKCF.ORG

## ABOUT THE 2024 SCHOLARS

COHORT SIZE

60

COMMUNITY TYPE

20%  
RURAL

41%  
SUBURBAN

39%  
URBAN

### RACE/ETHNICITY

AFRICAN AMERICAN OR BLACK 23%

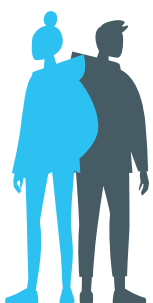
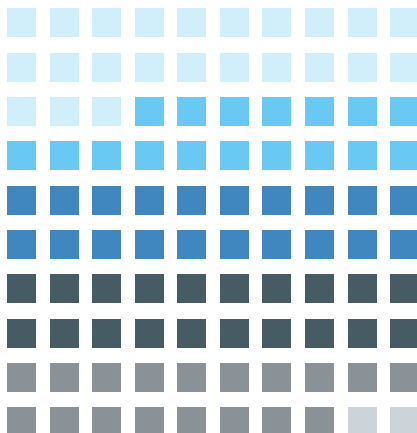
ASIAN OR ASIAN AMERICAN 17%

HISPANIC / LATINE OR SPANISH ORIGIN 20%

WHITE 20%

MULTIRACIAL 17%

PREFER NOT TO DESIGNATE 2%



58% FEMALE

40% MALE

2% PREFER NOT TO DESIGNATE



63%

FIRST-GENERATION COLLEGE GOERS



\$34,000

MEDIAN FAMILY ADJUSTED GROSS INCOME



## STAND-OUT ACHIEVEMENTS

63%

ENROLLED IN COLLEGE LEVEL COURSES WHILE IN HIGH SCHOOL (DUAL ENROLLMENT)

95%

RECEIVED NATIONAL OR STATE LEVEL HONORS AND/OR AWARDS

63%

HELD INTERNSHIPS AND/OR CONDUCTED RESEARCH

92%

HELD A LEADERSHIP ROLE IN A CLUB OR ACTIVITY (PRESIDENT, VICE PRESIDENT, FOUNDER)

93%

PARTICIPATED IN CIVIC OR COMMUNITY SERVICE ACTIVITIES



3.99

AVERAGE CUMULATIVE HIGH SCHOOL GPA (UNWEIGHTED)

OUR SCHOLARS ATTEND TOP PROGRAMS AT A RANGE OF COLLEGES AND UNIVERSITIES INCLUDING PUBLIC, PRIVATE, STATE, LIBERAL ARTS, HBCU, AND IVY LEAGUE INSTITUTIONS.

This data on our 60 College Scholars is compiled from their applications, which they submitted in the fall of their senior year of high school.

Some percentages may not add up to 100% due to rounding.